



A Summer of Community Engagement Summer Night Lights

Program Participation

723,507

Total Estimated Program Participation

24,949

Average Attendance Across 32 SNL Sites

780

Average Attendance Per SNL Site



Meals Served

SNL meal service was offered on a nightly basis during programming and featured healthy options such as turkey burgers, chicken breast, low-sugar drink mix, and fresh produce.

452,192

Total Meals Served



SNL Employment

- 326 Youth Squad Members (ages 17-24)
- 63 Site Coordinators
- 16 Cluster Coordinators
- 8 SNL Office Staff
- 39 Artists (Visual Arts, Music, Dance, Culinary)

- 150 Seasonal Community Intervention Workers (CIWs)
- 186 Coaches
- 229 Sports Officials

1,017 Citywide Employment Total

City Services

City partners were invited to conduct outreach at SNL sites, distribute information on City services and provide educational and work readiness programs.



- 2,866** Participants received Los Angeles Public Library resources.
- 2,550** Participants attended the Los Angeles County Metropolitan Transportation Authority safety presentations.
- 240** Youth Squad were certified work-ready through the City's HIRE LA Program.



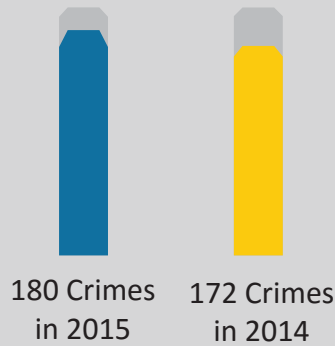
Crime Statistics

After 12 years of decline, the City of Los Angeles experienced an uptick in crime during 2015. At the end of the summer, there was a **12.7%** increase in serious crime year-to-date and a **19.6%** increase in total violent crime year-to-date compared to 2014.

SNL (Wednesdays-Saturdays)

All locations vs 2014

4.7%
Increase in Gang-Related Crime

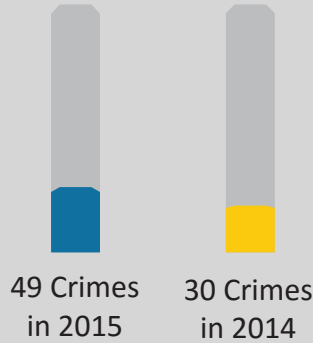


• 20 of 32 SNL sites saw a decrease or NO change in gang-related crimes.

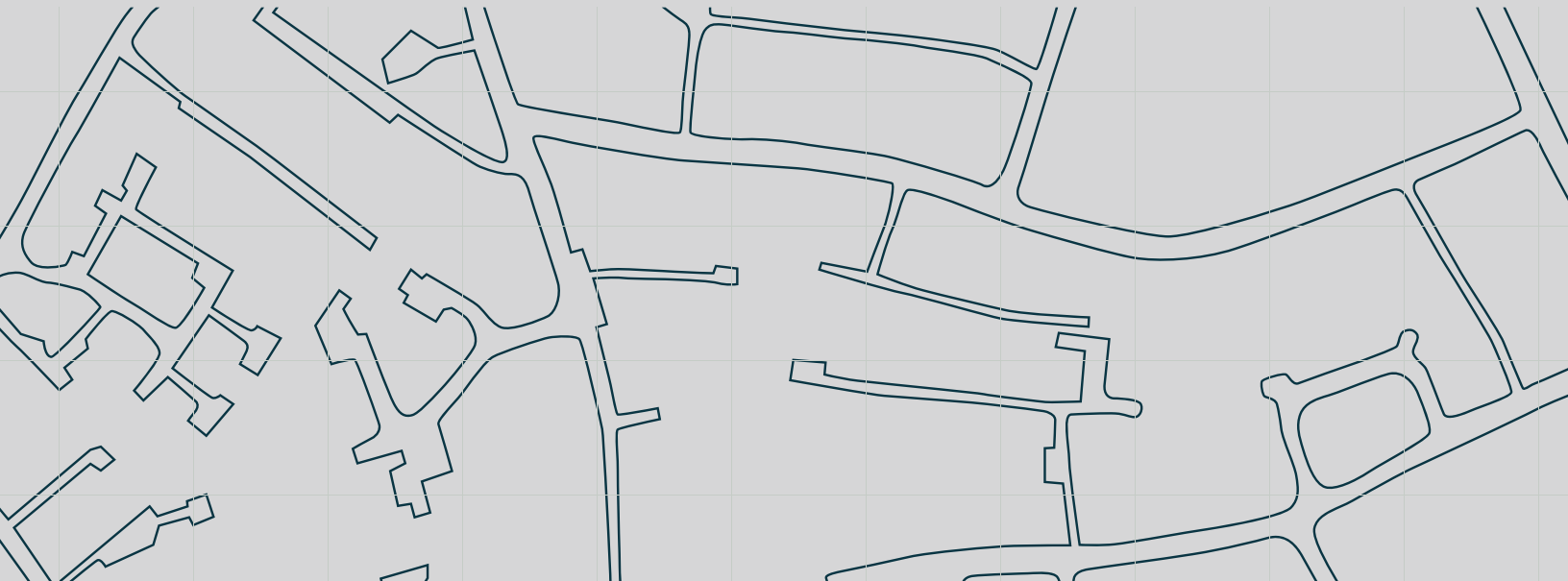
SNL (Fridays-Saturdays)

All locations vs 2014

63.3%
Increase in Gang Related Crime



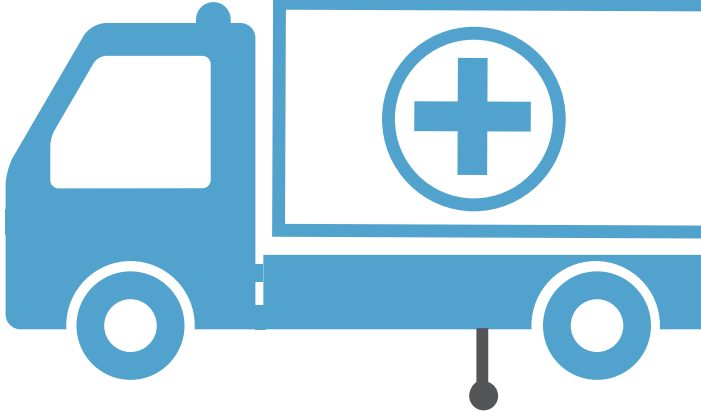
• 26 of 32 SNL sites saw decrease or NO change in gang-related crimes.





Caring about Community Health HEALTH & WELLNESS

In partnership with the Department of Public Health (DPH)



503
Participants



Across 24 SNL Sites
Received HIV/STI Testing

2,564
Participants
Received DPH Health
Resources



110

Participants Attended a
Laker Girls Dance Clinic
Offered by the
Los Angeles D-Fenders





Increasing Community Access to Sports Sports Programming

EACH SITE OFFERED SPORTS
LEAGUES (BASKETBALL,
SOFTBALL OR SOCCER) FOR
YOUTH AND ADULTS

9,642

Participants

SELECT SITES OFFERED SPECIALIZED **SPORT CLINICS**
TO PARTICIPANTS FREE OF CHARGE:

385

Participants in
Go Stadia Soccer
(4 Clinics)

265

Participants in
Los Angeles
Galaxy
(4 Clinics)

195

Participants in
Los Angeles Kings
(2 Clinics)



173

Participants in
Los Angeles Sparks
(4 Clinics)

164

Participants in
Los Angeles D-Fenders
(4 Clinics)



SPORTS PROGRAMMING ENHANCEMENTS

489

Participants in
Rugby
Across 5 SNL Sites

441

Participants in
Tennis
Across 4 SNL Sites

130

Participants in
Galaxy Kick Starter
Reading Program
Across 2 SNL Sites

75

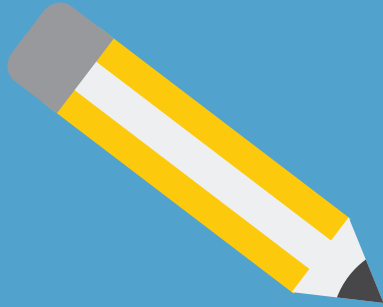
Participants in #WeLoveLAReaders
Across 3 SNL Sites



Celebrating Community Creativity & Culture

ART PROGRAMMING

Art workshops were offered twice per week during regular programming and once per week during the part-time program.



21,990

Total Art Workshop Participants



Zumba/Fitness Workshops

Offered at each site twice per week during full time programming and once per week during the part time program to encourage community health and wellness.

7,574

 Total Zumba Participants

537

 Total Zumbathon Participants Across 4 SNL Sites



Opportunities to Explore New Interests

Special Programs



1,040

Participants in the
Science Van
Across 13 SNL Sites



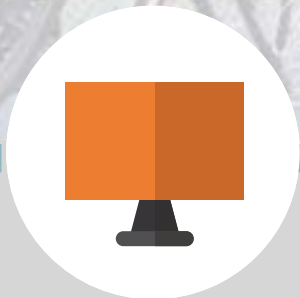
272

Participants in the
Street Poets Spoken
Word Workshops
Across 8 SNL Sites



221

Participants in the
Fleet Street Bike Repair
Workshop Across
6 SNL Sites



193

Participants in the
Cultural Affairs Presentation
Across 7 SNL Sites



137

Participants in the
Capoeira Classes
Across 4 SNL Sites



Highlighted Partnerships

DISNEY MOVIE NIGHT & IMAGINATION PLAYGROUND

Disney community relations staff as well as their VoluntEARS coordinated a movie night (The Incredibles) at Cypress Park, and also provided the interactive Imagination Playground.

LA GALAXY

This year in addition to soccer clinics, the LA Galaxy partnered with SNL to launch their Kick Start Reading Challenge at 4 sites during SNL literacy corner programming.

LA DODGERS

Worked with the LA Dodgers to unveil the first annual #WeLoveLAReaders reading challenge program that took place at 3 SNL sites (South Park, MLK and Algin Sutton).

LAPD COMMUNITY RELATIONSHIP DIVISION

Training session was conducted for the LAPD Community Relationship Division this summer, along with scheduled visits to parks throughout the City.



Thank You!

The Mayor's GRYD Office is proud to partner with the [GRYD Foundation](#) and the [Mayor's Fund for Los Angeles](#) to increase safety and build resiliency in our communities.

Thank you to our donors for their commitment and generosity!

AT&T
Cooperative of American Physicians
Dodgers Foundation
GUESS
John W. Carson Foundation
JM Eagle Foundation
Kaiser Permanente
Katie McGrath & JJ Abrams Family Foundation
LA 84 Foundation
NBC Universal
Oakland Raiders
Pacific Southwest Tennis Association/
Southern California Tennis Association
Sony
Southern California Gas Company
Stanley & Joyce Black Foundation
The Ahmanson Foundation
The Annenberg Foundation
The California Endowment
The David Bohnett Foundation
The Eisner Foundation
The Ralph M. Parsons Foundation
UniHealth Foundation
Walt Disney Company
Weingart Foundation
Wells Fargo

LA D-Fenders
LA Galaxy
LA Kings
LA Sparks
Paramount Pictures
Ralphs
Starbucks
TECHSOUP
Walt Disney Company
Vans

